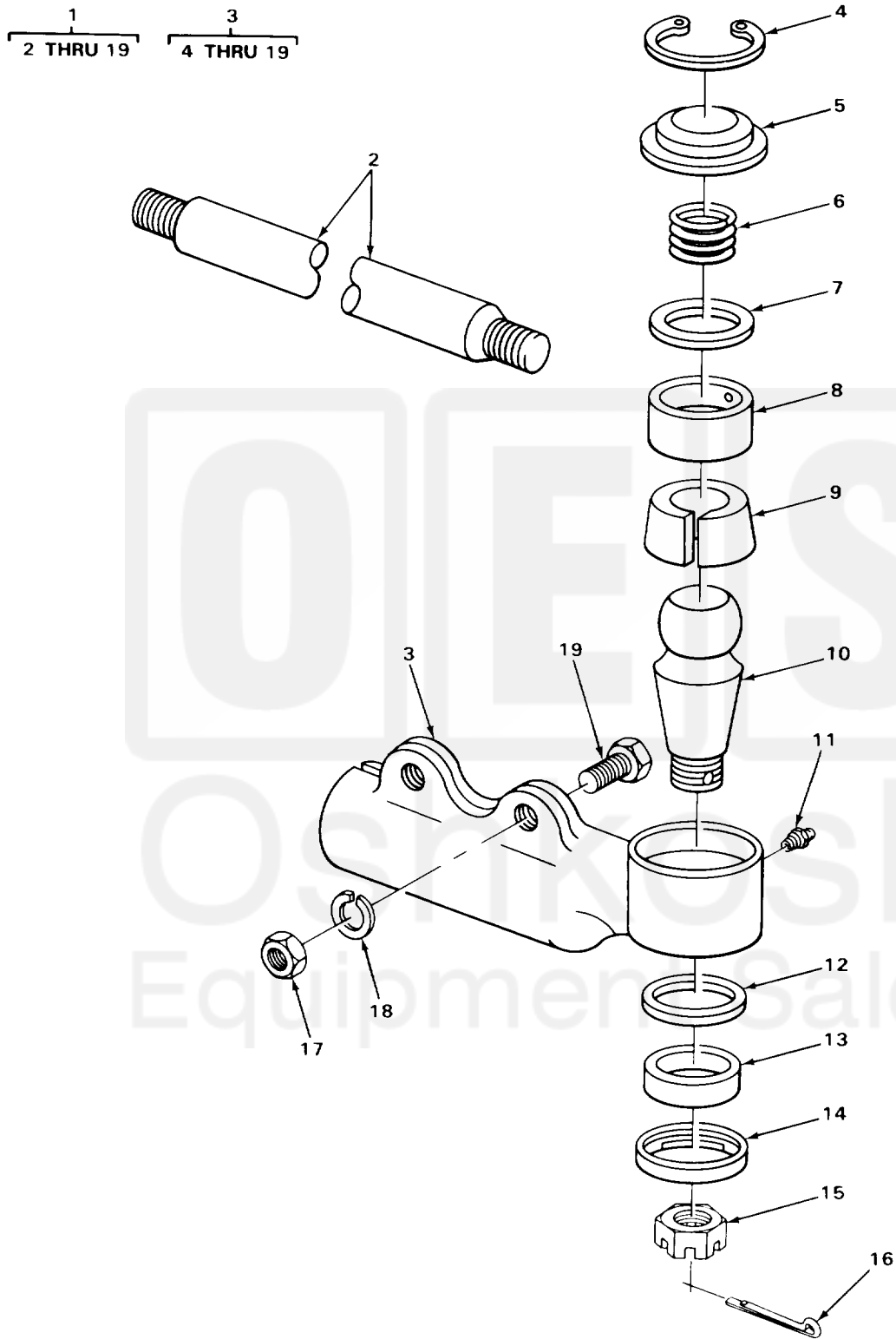


SECTION II

TM 10-3930-242-24P



TA705457

FIGURE 131. DRAG LINK (FRONT).

Current part is item (3) on diagram. Available at [www.oshkosequipment.com](http://www.oshkosequipment.com)

| ITEM NO                                      | SMR CODE | CAGEC | PART NUMBER | DESCRIPTION AND USABLE ON CODES (UOC)               | QTY |
|--|----------|-------|-------------|---|-----|
| GROUP 1401 MECHANICAL STEERING GEAR ASSEMBLY |          |       |             |   |     |
| FIG. 131 DRAG LINK (FRONT)                   |          |       |             |   |     |
| 1  | PAFZZ    | 03677 | LT1-522     | DRAG LINK, STEERING<br>UOC: CMP, CMQ, U73, U74      | 1   |
| 2  | XBFZZ    | 72210 | D18542      | .TUBE   | 1   |
| 3  | PAFZZ    | 72210 | S7510J      | .TIE ROD SOCKET ASSE RH<br>UOC: CQK, U72            | 1   |
| 3  | XDFZZ    | 72210 | D18543      | .TIE ROD END, STEERIN RH<br>UOC: CMP, CMQ, U73, U74 | 1   |
| 3  | PAFZZ    | 72210 | S7510J      | .TIE ROD SOCKET ASSE LH                             | 1   |
| 4  | XDFZZ    | 72210 | S4250       | ..RING, RETAINING CAP                               | 1   |
| 5  | XDFZZ    | 72210 | S18570      | ..CAP, BALL STUD                                    | 1   |
| 6  | XDFZZ    | 72210 | S18585      | ..SPRING, HELICAL, COMP BALL STUD<br>RETAINING      | 1   |
| 7  | XDFZZ    | 72210 | S18576      | ..COVER, DUST SOCKET                                | 1   |
| 8  | PFFZZ    | 72210 | S18574      | ..BEARING HALF, SLEEVE SOCKET                       | 1   |
| 9  | XAFZZ    | 72210 | S18573      | ..SEAT, BALL SOCKET                                 | 1   |
| 10   | PAFZZ    | 72210 | S18577      | ..STUD, BALL DRAG LINK                              | 1   |
| 11   | PFOZZ    | 96906 | MS15003-1   | ..FITTING, LUBRICATION DRAG LINK                    | 1   |
| 12   | PAFZZ    | 97403 | 13212E4217  | ..DUST COVER  | 1   |
| 13   | PAFZZ    | 72210 | S18582      | ..BUSHING, NONMETALLIC                              | 1   |
| 14   | PFFZZ    | 72210 | S18575      | ..COVER, DUST                                       | 1   |
| 15   | PAFZZ    | 72210 | S18578      | ..NUT, PLAIN, CASTELLAT SOCKET MTG                  | 1   |
| 16   | PFFZZ    | 96906 | MS24665-357 | ..PIN, COTTER STUD BALL                             | 1   |
| 17   | PFFZZ    | 96906 | MS51972-7   | ..NUT, PLAIN, HEXAGON SOCKET MOUNTING               | 2   |
| 18   | PFFZZ    | 96906 | MS35338-50  | ..WASHER, LOCK                                      | 2   |
| 19   | PFFZZ    | 96906 | MS90727-166 | ..SCREW, CAP, HEXAGON H SOCKET MTG                  | 2   |

END OF FIGURE

Current part is item (3) on diagram. Available at [www.oshkosequipment.com](http://www.oshkosequipment.com)